

## RFP-Trap for Immunoprecipitation

From cell to gel in less than one hour

- ▶ No heavy & light chains in your downstream application
- ▶ Robust performance with high yield
- ▶ Short incubation time of about 30 minutes

For mCherry, mRFP, etc.

### RFP-Trap®

ChromoTek RFP-Trap is a fully validated, well-established tool for fast and efficient one-step immunoprecipitation of RFP-fusion protein variants and their interacting factors from cell extracts or organelles. For research applications only.

### Applications

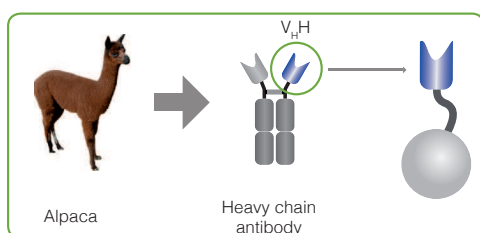
- Immunoprecipitation (IP) / Co-IP
- Mass spectrometry
- Enzyme activity measurements
- ChIP / RIP analysis

### Recognizes common RFP variants

- Including mCherry, mKate2, mPlum, mRFP, mRFPruby, tagRFP etc.
- Complete list at [www.chromotek.com](http://www.chromotek.com)

### Technology

Camelidae, e.g. alpacas, possess a type of antibodies called heavy chain antibodies. These are devoid of light chains and bind their antigen via a single variable domain ( $V_H$ ), also known as a nanobody. RFP-Trap consists of an alpaca single domain antibody that is coupled to agarose, magnetic agarose, and magnetic beads.



RFP-Trap:  
anti-RFP  $V_H$   
coupled to beads

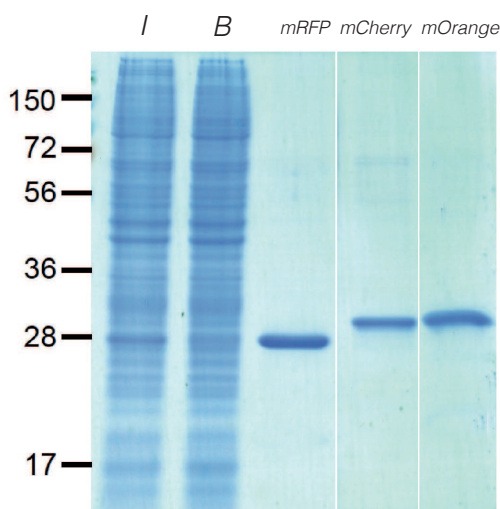
### Properties

- Highly affine with a low dissociation constant of 4nM
- Very high binding capacity of more than 8µg RFP per 10µl slurry; magnetic beads less
- Stable in harsh conditions up to 2M NaCl or 2M urea
- Versatile: coupled to agarose, magnetic agarose, and magnetic beads

### Validated affinity reagent

- Structure and function are fully characterized
- Produced at constant high quality virtually without batch-to-batch variation
- Proven: used for experiments published in more than 50 scientific articles

### Single band purification



Effective immunoprecipitations from protein extracts of human cells. Input (I), non-bound (FT) and bound fractions of mRFP, mCherry & mOrange were separated by SDS-PAGE followed by Coomassie staining.

## anti-RFP IgG Antibody 5F8 for IF

The most frequently cited anti-RFP antibody

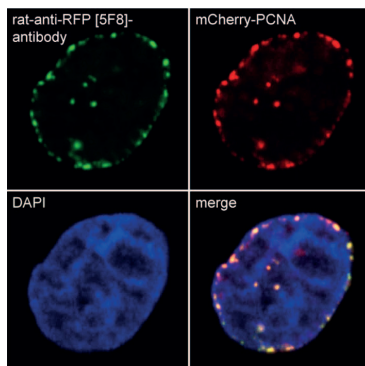
- ▶ **First in class: more than 100 publications**
- ▶ **Validated rat monoclonal antibody subtype IgG2a**

### anti-mRFP IgG antibody 5F8

ChromoTek anti-RFP antibody 5F8 is a reliable tool for sensitive detection of RFP-fusion protein variants in immunofluorescence (IF). It is ranked #1 referenced anti-RFP antibody at [www.citeAB.com](http://www.citeAB.com). For research applications only.

#### Specificity

Tested on dsRed, mCherry, mPlum, mRFP, mRFPruby



IF of HeLa cells stably expressing mCherry-PCNA

#### Applications

Immunofluorescence, ELISA, Immunoprecipitation

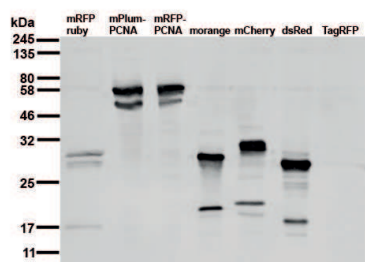
## anti-RFP IgG Antibody 6G6 for WB

Exceptional detection of red fluorescent protein variants

- ▶ **Very sensitive: down to 4ng RFP / band**
- ▶ **Validated mouse monoclonal antibody subtype IgG2c**

### anti-RFP IgG antibody 6G6

ChromoTek anti-RFP antibody 6G6 is an exceptional tool for sensitive detection of RFP-fusion protein derivatives in Western blots (WB). For research applications only.



WB cell extract of HEK cells transiently expressing different red fluorescent proteins

#### Specificity

Tested on dsRed, mCherry, mOrange, mPlum, mRFP, mRFPruby

#### Applications

Western blot

## Order information

Product name & description	Size	Code
RFP-Trap A	10 rxns	rta-10
▶ anti-RFP V <sub>H</sub> H	20 rxns	rta-20
coupled to agarose beads	100 rxns	rta-100
	200 rxns	rta-200
	400 rxns	rta-400
RFP-Trap A Kit		
▶ RFP-Trap A	20 rxns	rtak-20
▶ incl. lysis, wash and elution buffers		
RFP-Trap MA	10 rxns	rtma-10
▶ anti-RFP V <sub>H</sub> H	20 rxns	rtma-20
coupled to magnetic agarose beads	100 rxns	rtma-100
	200 rxns	rtma-200
	400 rxns	rtma-400
RFP-Trap MA Kit		
▶ RFP-Trap MA	20 rxns	rtmak-20
▶ incl. lysis, wash and elution buffers		
RFP-Trap M	10 rxns	rtm-10
▶ anti-RFP V <sub>H</sub> H	20 rxns	rtm-20
coupled to magnetic agarose beads	100 rxns	rtm-100
	200 rxns	rtm-200
	400 rxns	rtm-400
RFP-Trap M Kit		
▶ RFP-Trap M	20 rxns	rtmk-20
▶ incl. lysis, wash and elution buffers		
Spin columns	10 units	sct-10
	20 units	sct-20
	50 units	sct-50
Binding control	20 rxns	bab-20
▶ agarose beads		
Binding control	20 rxns	bmab-20
▶ magnetic agarose beads		
Binding control	20 rxns	bmp-20
▶ magnetic agarose beads		
<b>anti-RFP antibodies:</b>		
anti-RFP V <sub>H</sub> H/RFP binding protein		
▶ Camelid; purified V <sub>H</sub> H protein for IP, ELISA, and IF. Used in RFP-Trap	250µg	rt-250
anti-RFP antibody [5F8]	20µl	5F8-20
▶ Rat monoclonal IgG2a for Immunofluorescence	100µl	5F8-100
anti-RFP antibody [6G6]	20µl	6G6-20
▶ Mouse monoclonal IgG2c for Western Blotting	100µl	6G6-100

## Order online – Save shipping costs!

USA orders:

online [www.chromotek.com/webshop](http://www.chromotek.com/webshop)

USAorders@chromotek.com ▶ fax 631.501.1060

All other orders:

online [www.chromotek.com/webshop](http://www.chromotek.com/webshop)

order@chromotek.com ▶ fax +49. 89.124.148.811

### ChromoTek GmbH, Germany

Am Klopferspitz 19

D-82152 Planegg-Martinsried

Phone: +49. 89. 124. 148. 80 Fax: +49. 89. 124. 148. 811

### ChromoTek Inc., USA

400 Oser Ave Ste 1650

Hauppauge, NY 11788

Phone: 631. 501. 1058 Fax: 631. 501. 1060

[info@chromotek.com](mailto:info@chromotek.com)

[www.chromotek.com](http://www.chromotek.com)